

COMMON MODE CHOKES STC02F SERIES

FEATURES:

- Inductance range from 25uH to 1340uH
- Current range up to 5.35 Amps
- Noise attenuation up to 44 dB
- Frequency range up to 100 MHz
- Meets UL94V-0 flammability standard
- Ferrite core material

OPTIONS:

- Supplied in tape and reel packaging

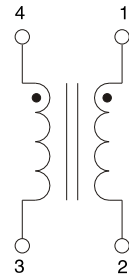
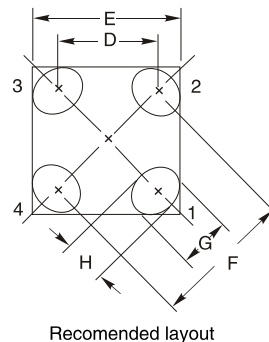
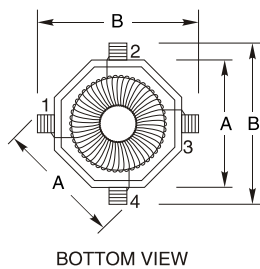
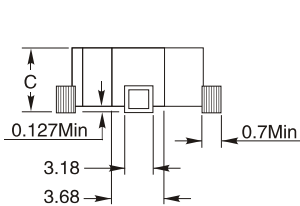
COMMON APPLICATIONS:

- EMI filters
- DC-DC brick power supplies
- Discrete output supplies
- Discrete and point-of-use power supplies

ELECTRICAL CHARACTERISTICS:

Part Number	L(0A) (uH) Min 100KHz,0.1V	I _{rms} (A)Max	DCR (Ω)Typ (1-2)	DCR (Ω)Typ (4-3)	L _k (uH) Typ 100KHz,0.1V	Interwinding Capacitance (pF)
STC02F-250Y	25	5.35	0.005	0.005	0.22	2.0
STC02F-400Y	40	4.40	0.008	0.008	0.34	2.3
STC02F-570Y	57	3.60	0.012	0.012	0.47	2.5
STC02F-101Y	102	2.80	0.019	0.019	0.80	2.8
STC02F-161Y	160	2.30	0.029	0.029	1.25	3.1
STC02F-231Y	230	1.85	0.044	0.044	1.75	3.4
STC02F-271Y	270	1.60	0.060	0.060	2.00	3.6
STC02F-361Y	360	1.35	0.084	0.084	2.60	3.9
STC02F-461Y	460	1.10	0.120	0.120	3.30	4.1
STC02F-571Y	575	0.94	0.170	0.170	4.00	4.3
STC02F-701Y	700	0.80	0.230	0.230	5.00	4.6
STC02F-911Y	915	0.67	0.330	0.330	6.30	4.9
STC02F-102Y	1070	0.58	0.440	0.440	7.30	5.1
STC02F-132Y	1340	0.50	0.620	0.620	9.00	5.4

PHYSICAL CHARACTERISTICS



NOTES:
 Inductance measure at 100KHz 0.1VRms.
 Insulation Resistance: 100Vdc 1KMΩ min.
 Dielectric Strength: 500 Vrms between windings
 Turns Ratio: 1:1
 RDC:QuadTech 1880 Milliohmmer
 Soldering temperature:260°C for 4 ± 1 seconds
 Operating temperature:-40°C to +125°C
 Storage Temperature: -40°C to +125°C
 Different package available per special request
 Max of 35% saturation on DC bias applied

A	B	C	D	E	F	G	H
8.89	11.43	6.0Max	7.04	10.72	9.96	3.68	3.05