

SHAANXI SHINHOM ENTERPRISE CO.,LTD



Tel: 029-87851838

Fax: 029-87851840

E-mail: sales@shinhom.com.cn

Product Category

**RF Coaxial Connectors
RF Coaxial Adapters**

**Integrated Connectors
Rectangular Connectors
(MDM connectors)**

RF Cable Assemblies

**Waveguide Adapters
-Cable assemblies**

Microwave Rotary Joints

**Tools
Other products**

RF Coaxial Connectors

The Frequency Range of Elite Electronic RF Connector

Connector	Frequency											
	3GHz	10GHz	15GHz	20GHz	25GHz	30GHz	35GHz	40GHz	45GHz	50GHz	65GHz	67GHz
1.85												67GHz
CSMP											65GHz	
2.4										50GHz		
SSMP										50GHz		
D4										50GHz		
2.92								40GHz				
SMP								40GHz				
3.5							33GHz					
SSMA						30GHz						
SBMA						28GHz						
ASMP						26.5GHz						
SMA				18GHz								
BMA				18GHz								
4.3-10		12GHz										
SMC		11GHz										
N		11GHz										
TNC		11GHz										
7/16	7.5GHz											
MCX	6GHz											
MMCX	6GHz											
SMB	4GHz											
BNC	4GHz											
SSMB	3GHz											

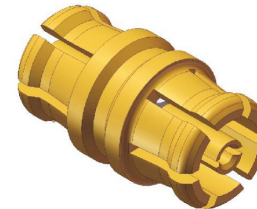
Between Series Adapters

- SMA to SSMA
- SMA to SMP
- SMA to MCX
- SMA to SMP
- RPSMA to SMA
- SMA to CP
- BNC to SMA
- SMA to SMB
- N to SMA
- TNC to SMA
- N to BNC
- SMA to SSMC
- N to 3.5mm
- K(2.92mm) to SSMP
- K (2.92mm)to SMP
- 3.5mm to 2.4mm
- 3.5mm to K(2.92mm)
- K(2.92mm) to 2.4mm



In-series Adapters

- BNC to BNC
- N to N
- SC to SC
- SMA to SMA
- SMB to SMB
- SMP to SMP
- SSMP to SSMP
- SSMA to SSMA
- 3.5mm to 3.5mm
- K(2.92mm) to K(2.92mm)
- 2.4mm to 2.4mm



RF Cable Assemblies

Connector A	Cable Type	Connector B	Note
ASMP BMA BNC	Flexiable series	ASMP BMA BNC	Most used cable: *RG series *Semi-flexible /rigid Cables
CSMP D4 4.3-10	CXN series(Low Loss Temperature Stable Phase Series)	CSMP D4 4.3-10	
MCX MMCX MSSM	MF soft series	MCX MMCX MSSM	
N Type 7/16 DIN	SF soft series(The flexible low loss cable of HUBER+SUHNER)	N Type 7/16 DIN	
QSA QSB QSSB	EF series(Eco-friendly)	QSA QSB QSSB	
SBMA SC SMA	Super soft series	SBMA SC SMA	
SMB SMC SMP	Armored test series	SMB SMC SMP	
SSMA SMMB SSMP	RG series	SSMA SMMB SSMP	
TNC TNCA TMA	Customized series	TNC TNCA TMA	
1.85mm 3.5mm K(2.92mm) 2.4mm		1.85mm 3.5mm K(2.92mm) 2.4mm	



Waveguide to Coax Adapters

Coaxial type:

N, TNC, SMA, 3.5, 2.4, SMP, SSMP

Wave-guide:

BJ84 ~ BJ500(WR112~WR18)

Structure:

end launch, right angle launch

Waveguide bandwidth:

All bandwidth

20% bandwidth

Frequency Range:

6.5~50GHz

Material:

Aluminum

Copper



Cross-references of waveguide Standards

Frequency Range GHz	Chinese Standards	International Standards
1.13~1.73	BJ14	WR650
1.45~2.20	BJ18	WR510
1.72~2.61	BJ22	WR430
2.17~3.30	BJ26	WR340
2.60~3.95	BJ32	WR284
3.22~4.90	BJ40	WR229
3.94~5.99	BJ48	WR187
4.64~7.05	BJ58	WR159
5.38~8.17	BJ70	WR137
6.57~9.99	BJ84	WR112
8.20~12.5	BJ100	WR90
9.84~15.0	BJ120	WR75
11.9~18.0	BJ140	WR62
14.5~22.0	BJ180	WR51
17.6~26.7	BJ220	WR42
21.7~33.0	BJ260	WR34
26.3~40.0	BJ320	WR28
32.9~50.1	BJ400	WR22
39.2~59.6	BJ500	WR18
49.8~75.8	BJ620	WR14
60.5~91.9	BJ740	WR12
73.8~112	BJ900	WR10

Waveguide Cable Assemblies

Cable type:

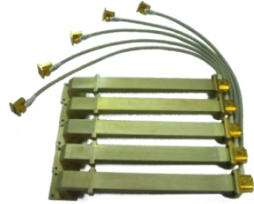
SF101E,SF102E,MF30,SF103E,
SF104E,MF90,CXN3450

Wave-guide:

BJ84 ~ BJ500(WR112~WR18)

Structure:

end launch, angle type



Waveguide bandwidth:

20% bandwidth

Frequency Range:

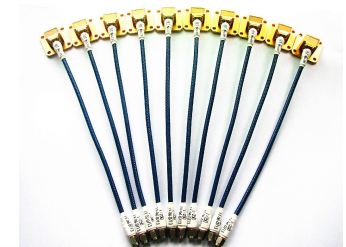
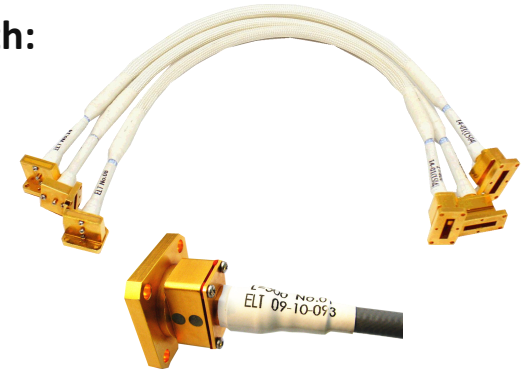
4~70GHz

VSWR:

≤1.3

High temperature:

+400°C



Data of most used RF low loss soft cable

Cable Type	Cable OD	Cable Loss (dB/m)												
		4GHz	6GHz	8GHz	10GHz	12GHz	15GHz	18GHz	20GHz	26.5GHz	30GHz	36GHz	40GHz	50GHz
SF101E	Φ3.6	0.98	1.21	1.42	1.59	1.75	1.98	2.18	2.31	2.70	2.89	3.20	3.40	3.86
SF102E	Φ3.9	0.85	1.05	1.22	1.37	1.51	1.70	1.87	1.98	2.31	2.47	2.73	2.89	
MF30	Φ4	0.76	0.93	1.09	1.22	1.36	1.53	1.70	1.82	2.12	2.28	2.55	2.71	
SF103E	Φ4.4	0.66	0.81	0.95	1.07	1.18	1.33	1.46	1.55	1.81	1.94			
SF104E	Φ5.5	0.54	0.67	0.78	0.88	0.97	1.10	1.21	1.29	1.51				
MF90	Φ5.3	0.67	0.83	1.00	1.11	1.22	1.39	1.54	1.65	1.93				
CXN3450	Φ7.4	0.31	0.38	0.44	0.50	0.55	0.62	0.68						

Microwave Rotary Joints

Types:

Single channel coaxial series

Double-channel series

Three-channel series

Four-channel series

MMW series

Features:

Small Standing Wave

Low Loss

High Integration

Small Phase Fluctuation

Application:

Used in microwave equipment of radar/navigation/detection,etc.



Integrated Connectors

Types:

RF integrated
High and low frequency mixing

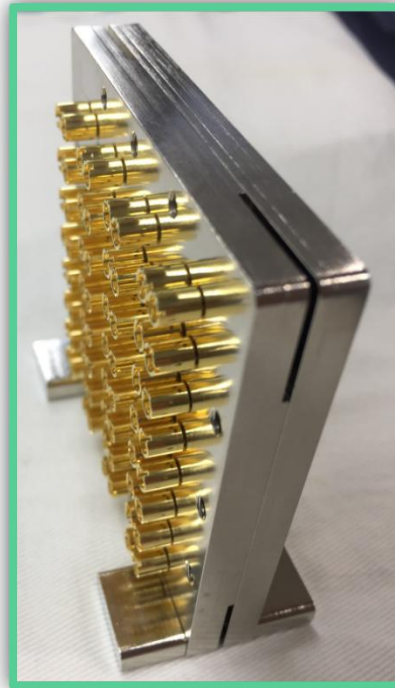
Channel shielding efficiency:
≥80dB

Shape:

Rectangular, Circular

Frequency Range:

DC~40GHz



Features:

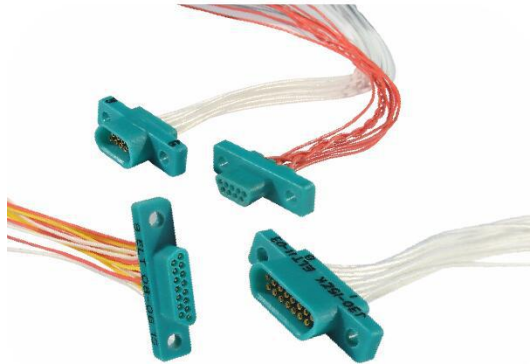
- ✓ Multiple signals can be connected and transmitted at the same time.
- ✓ High efficiency of connection
Convenient for system maintenance
- ✓ Won National Defense Science and Technology Progress Award
- ✓ Various types of signals can be integrated, such as RF, current, optical fiber, differential, etc.



Miniaturized Rectangular Connectors(MDM)

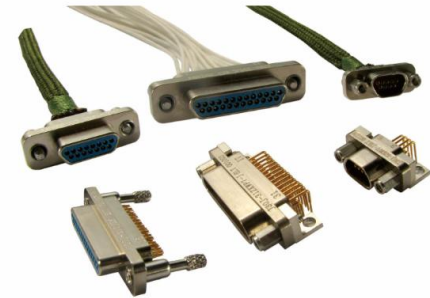
Types:

- J30J series
- J30JM(Hermetic) series
- J30(Plastic) series
- J50J series
- J55A series
- J55AM(Hermetic) series
- J56J series



Applications:

- ✓ Avionics, radars
- ✓ Missiles and guidance systems
- ✓ On-board equipment
- ✓ Telecommunication systems
- ✓ Navigation systems
- ✓ Research centres
- ✓ Medical applications
- ✓ Cable to Cable
- ✓ Board to Cable
- ✓ Surface Mount (SMT) Board to Cable

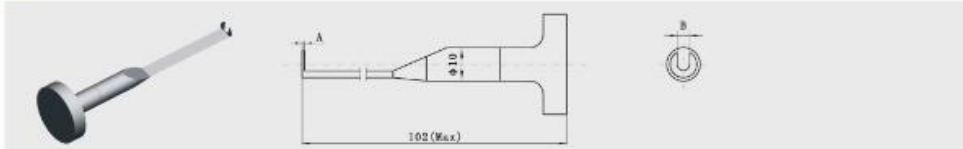


Features:

- 0.635mm,1.27mm,1.91mm contact spacing
- 1, 2, 3,4 row options
- 9-100 contacts
- MIL-DTL-83513 qualification
- Straight, right-angle models choice
- Space and weight saving.
- Excellent resistance to shock and vibration.
- Low contact resistance, high current capability, high dielectric strength.
- Custom designed connectors and cable assemblies.

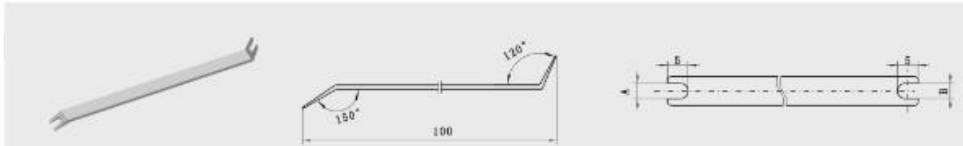
Tools

Puller for connector with cable



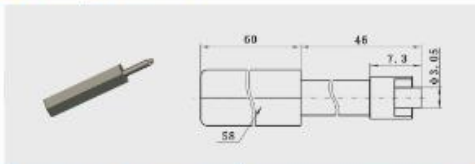
Model Number	A	B	Typical adaptation products
QT002	1	3.3	SMP-KF506-2 SMP-KB2
QT003	1	3.5	SMP-KF8506-1
QT007	1	4.05	SMP-K506-1
QT037	0.7	3.7	SMP-KF180 SMP-KF506-34

Disassembling tooling



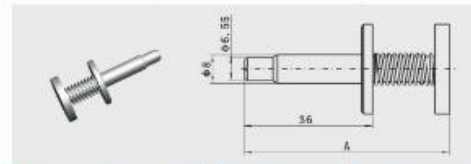
Model Number	A	B	Typical adaptation products
QT004	3.7	3.8	SMP-KWB2 SMP-KWB2A
QT012	3.4	3.4	SMP-KWF180

Torque wrench



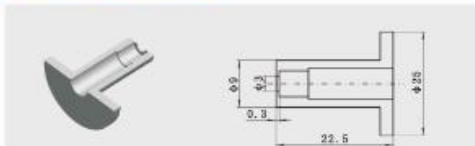
Model Number	Typical adaptation products
QT005	SMP-JYD4G SMP-JYD4

Insertion and Extraction tooling

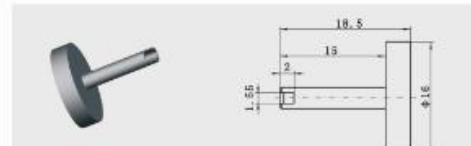


Model Number	A	Adaptation products
QT032	57	SMP-KK
QT033	57	SSMP-KK

Puller for adaptor



Model Number	Typical adaptation products
QT034	SMP-KB2



Model Number	Typical adaptation products
QT077	CSMP-KK

Tools for cables and connectors

Types:

- Puller for connector with cable
- Disassembling tooling
- Torque wrench
- Insertion and extraction tooling
- Puller for adaptor

Application:

SMP, SSMP

➤ Please contact us for more tools.

Rf coaxial matched loads

Types:

SMA, SSMA, SMP, N, K, TNC

Male, Female

Impedance: 50Ω

Frequency Range: 0-30GHz

VSWR: ≤1.3

Power capacity: -5W



Glass-to-metal hermetic seals /Insulator/Feedthrough/Connector

Types:

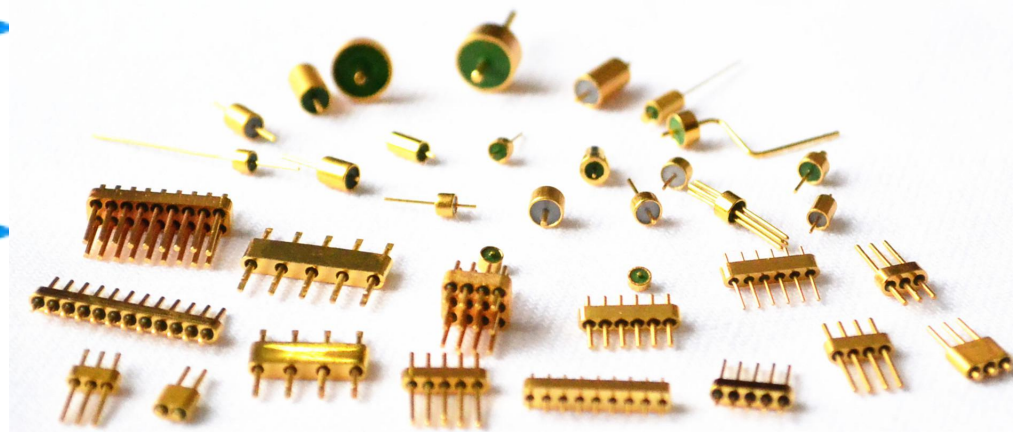
Single core, multicore, 1-3 rows

Features:

Small, lightweight, hermetic, reliable

Application:

Glass insulators are mainly used for the transmission of microwave signals, power signals and control signals between modules and modules, modules and components that request hermetic sealing, can be used with SMA, millimeter wave products; They are one of the most critical components for seal assemblies.



SHAANXI SHINHOM ENTERPRISE CO.,LTD

Tel: 029-87851838

Fax: 029-87851840

E-mail: sales@shinhom.com.cn

No.8, Yanta Northern Road, Xi'an Shaanxi Pro. China.